



RPAS

Zangão

SkyDrones

Since 2008, SkyDrones develops and manufactures, using state of the art technologies, fixed and rotary wing remotely piloted platforms.

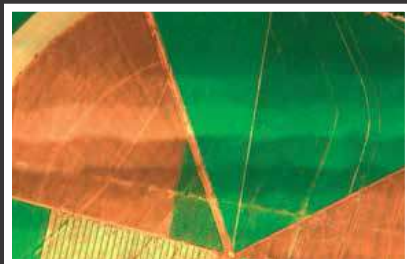
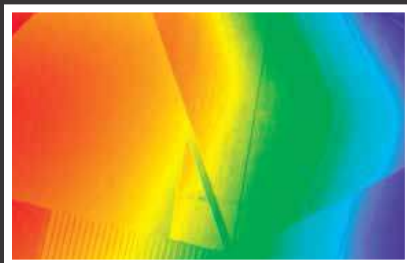
Besides the aircraft, we also offer a wide range of services and solutions focused in meeting specific sectors and client requirements.



Zangão is an aerial platform carrying sophisticated electronics, allowing it to operate different image capture systems, offering an excellent cost-benefit.

ZANGÃO HIGHLIGHTS

- 1** Totally automated flight. Take-off by catapult and landing by parachute.
- 2** Cruising speed up to 25 m/s, resisting winds up to 13 m/s
- 3** Easy and versatile camera bay to carry RGB or multispectral cameras. Image capture for NDVI maps and 3D models.
- 4** Pix4D: Mapping software from Switzerland



Zangão RPAS (Remotely Piloted Aerial System) is equipped with electronic instrumentation and control systems allowing safe and highly stabilized flights, even for operators with minimum training. It offers high payload flexibility and great reliability. Its sensors allow flights, covering pre-set areas with no need of human intervention.

Zangão is not an adopted toy aircraft, it was developed from ground up as a modular platform, capable of carrying many different types of aerial mapping cameras .

FEATURES

- Electric motor
- Altitude sensor
- MEMS Gyroscopes (3 axis)
- Accelerometer (3 axis)
- Magnetic sensor (3 axis)
- GPS or RTK
- Wingspread: 1.6 m
- Payload: 1100 g (battery + camera)
- Weight: 2 kg (no batteries)
- Maximum takeoff weight: 3300 g
- Flight time: 30 to 60 minutes*
- Cruising speed: 20 to 25 m/s
- Altitude: up to 5000 m (16,404 ft) above sea level (ASL)
- Radio link range (line of sight): 5 km

APPLICATIONS

- Mapping agricultural areas
- Topography/Surveying
- Environmental monitoring
- Inspection of transmission lines
- Inspection of industrial plants
- Volume calculation in mining and construction sites
- Generation of wind-intensity maps for wind farms

OPERATION

- Covering in a single flight: up to 10 km²
- Ground Sample Distance (GSD): up to 1,5 cm
- Orthomosaic precision: up to 3 cm
- Digital elevation model precision: up to 5 cm

*May vary on payload, battery size and atmospheric conditions



The Zangão V won the
Bornancini Industrial
Design Award 2014



PARTNERS

MicaSense

Multispectral cameras
Parrot Sequoia and RedEdge

PIX4D

Mapping Software

dji

FLIR



+55 (51) 3328 6091
contact@skydrones.com.br

www.skydrones.com.br